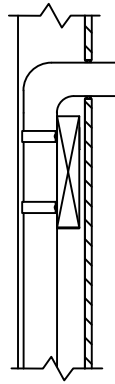
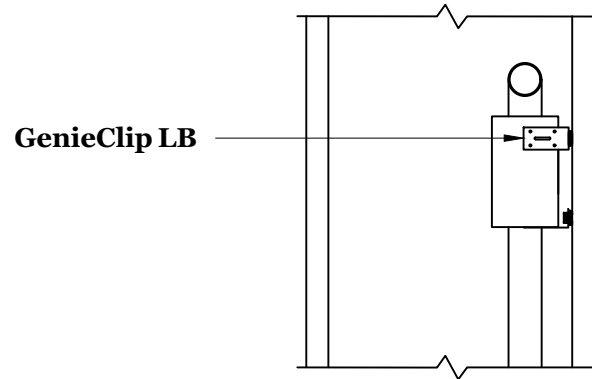


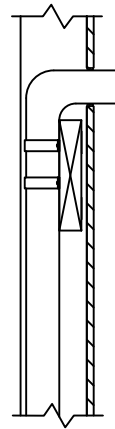
PROFILE VIEW



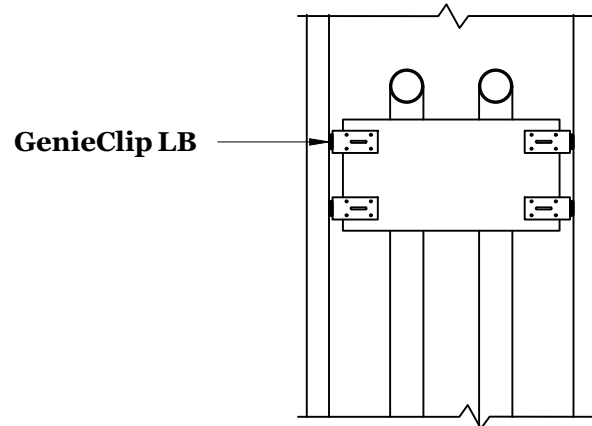
FRONT VIEW



PROFILE VIEW



FRONT VIEW



Phone: (416) 449 - 0049
 Fax: (416) 849 - 0415

131 Royal Group Crescent
 Vaughan, ON L4H 1X9
 Canada

GENERAL NOTES:

The information provided in this drawing is accurate to the best of our knowledge at the time of printing. However, we reserve the right to make changes when necessary without notification.

© Pliteq Inc. 2017.

Notes

PROJECT: **GenieClip® LB** Accessory Series

DRAWING: Isolated Framing for Stub-Out Mounting

DRAWN BY: G. Hart

DATE: 2017-01-09

DWG. NO.:
 LB25

SCALE: N/A