



**It's not magic, it's engineering.®**

Impact Sound Control

## GENIEMAT® D-SERIES

Underlayment for Reduced Sound Transmission



# GENIEMAT<sup>®</sup> D-SERIES

## Next Generation Sound Control Systems

FROM THE INVENTOR OF THE PATENTED TECHNOLOGY (US 6920723, US RE41945, CA 2398262) FOR RECYCLED RUBBER USED FOR IMPACT SOUND INSULATION, DIRECTLY BELOW FLOOR COVERINGS.

**GenieMat DH** is a resilient floor underlayment mat made from 94% recycled mixed polymer content. The optimized design allows for maximum reduction of impact sound pressure at minimum thickness. Ideal for new multifamily housing, retrofits, or commercial buildings.

It is the first in the D-Series range of products. Designed specifically to further reduce the noise associated with footsteps, objects being dropped and furniture being moved on hard surfaces in heavyweight concrete type structures.

Engineered for direct adhered floor coverings such as tile, stone, wood, and vinyl floor coverings.

**Tile** – All products rated for minimum of commercial use.

**Wood** – **GenieMat FAS** adhesives offer superior bonding strength.

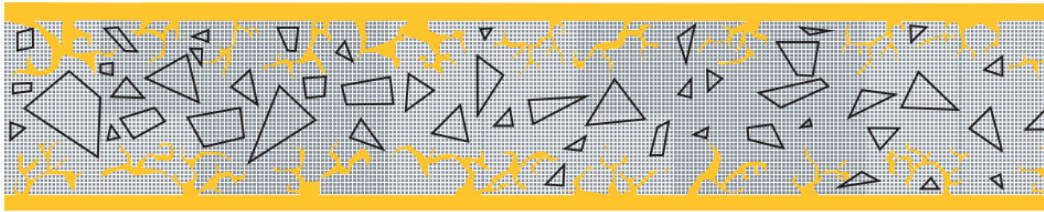
**Vinyl** – One-step method provides superior sound control for resilient floor coverings

### FEATURES AND BENEFITS

- Significantly reduces impact sound
- Mold, bacteria, fungi, and water resistant
- Exceeds pass criteria for point load test for crack isolation membrane (ANSI 118.12)
- Meets requirements for VOC emissions (IAQ test, ASTM D5116)
- Qualifies for LEED<sup>®</sup> points
- Floorscore<sup>®</sup> certified
- Improved high-frequency impact isolation class (HIIC) and IIC rating
- Higher impact sound ratings than **GenieMat RST**

PRODUCT	THICKNESS	ROLL SIZE	DYNAMIC STIFFNESS (ASTM D5992)	TYPE A HARDNESS (ASTM D2240)	TCNA ROBINSON TEST WITH TILE (ASTM C627)
<b>GenieMat DH755</b>	1/8"	4' x 50'	46 MN/m <sup>3</sup>	45 durometer	Moderate commercial
<b>GenieMat DH760</b>	1/4"	4' x 21.5'	40 MN/m <sup>3</sup>	45 durometer	Light commercial
<b>GenieMat DH765</b>	7/16"	4' x 13.5'	27 MN/m <sup>3</sup>	45 durometer	Light commercial

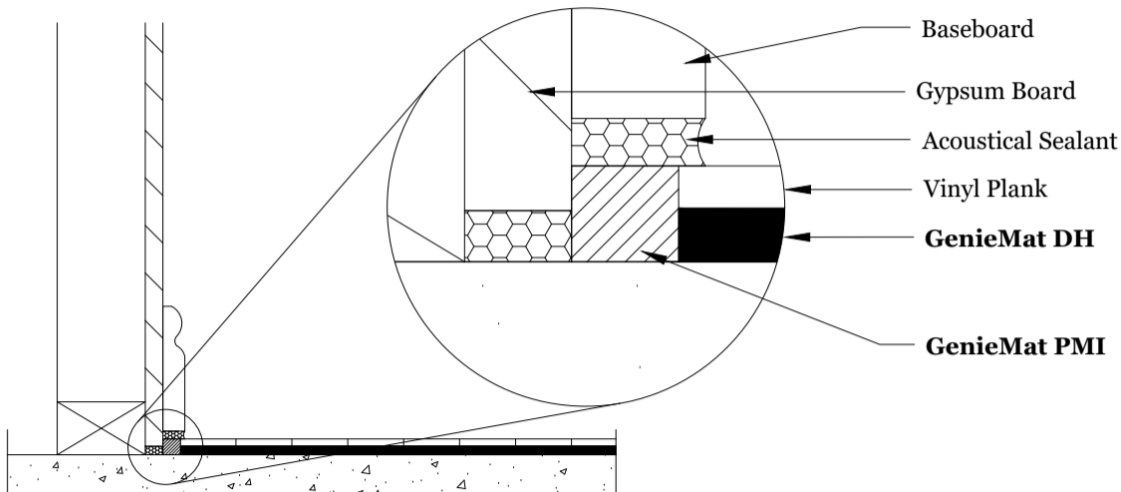
# RUBBER IS THE BEST VIBRATION ISOLATION MATERIAL



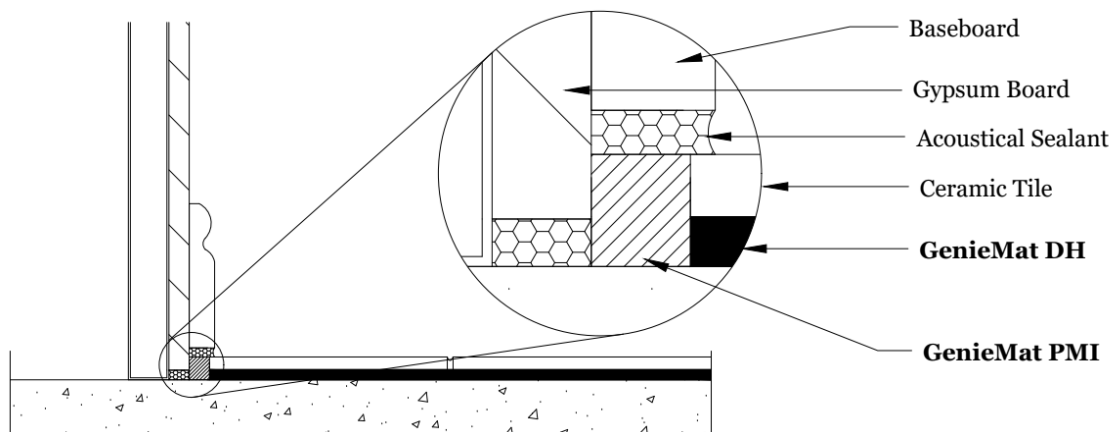
POSITIVE ADHESIVE LOCK  
FOR VERY HIGH BOND  
STRENGTHS WITH ADHERED  
FLOOR COVERINGS

APPROVED FOR PORCELAIN TILE, VINYL SHEET, LUXURY VINYL PLANK, CERAMIC TILE, AND ALL TYPES OF WOOD FLOOR

## Fully Warranted Vinyl Plank System



## Fully Warranted Ceramic Tile System

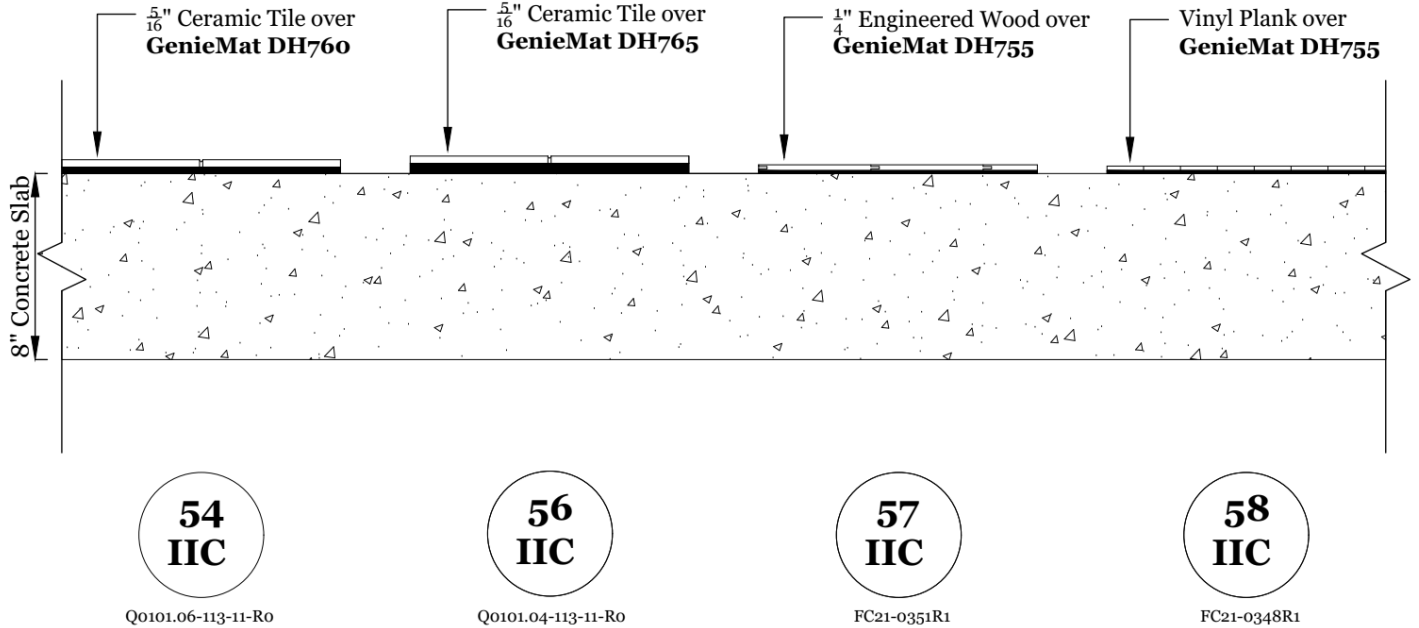


\*Contact **Pliteq** engineering for alternative installation methods.

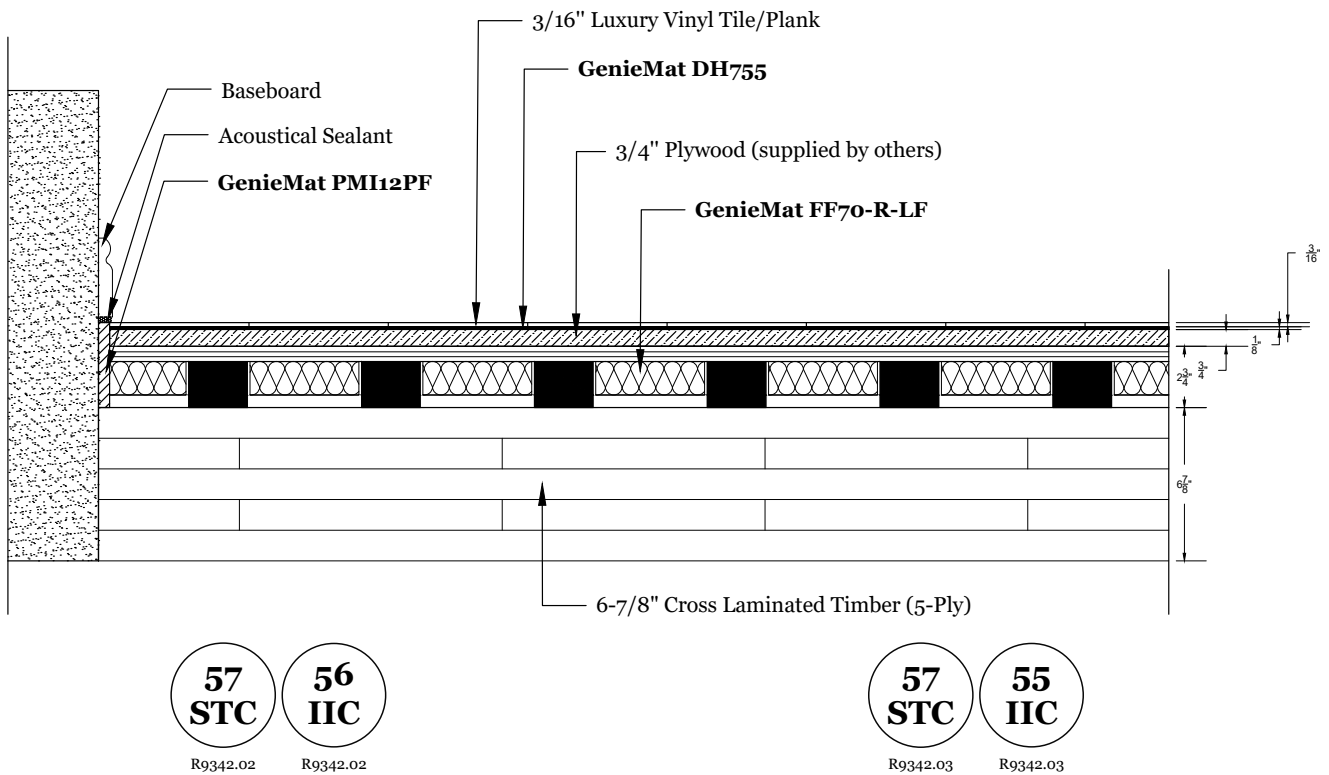
# GENIEMAT® DH ACOUSTICAL TEST DATA

## IMPACT INSULATION SYSTEM

### 8" Concrete Slab



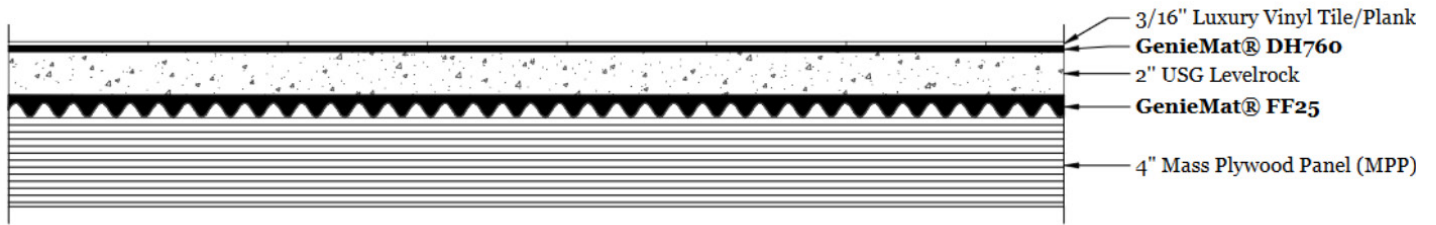
### Cross Laminated Timber



# GENIEMAT® DH ACOUSTICAL TEST DATA

## IMPACT INSULATION SYSTEM

### Mass Plywood Panel

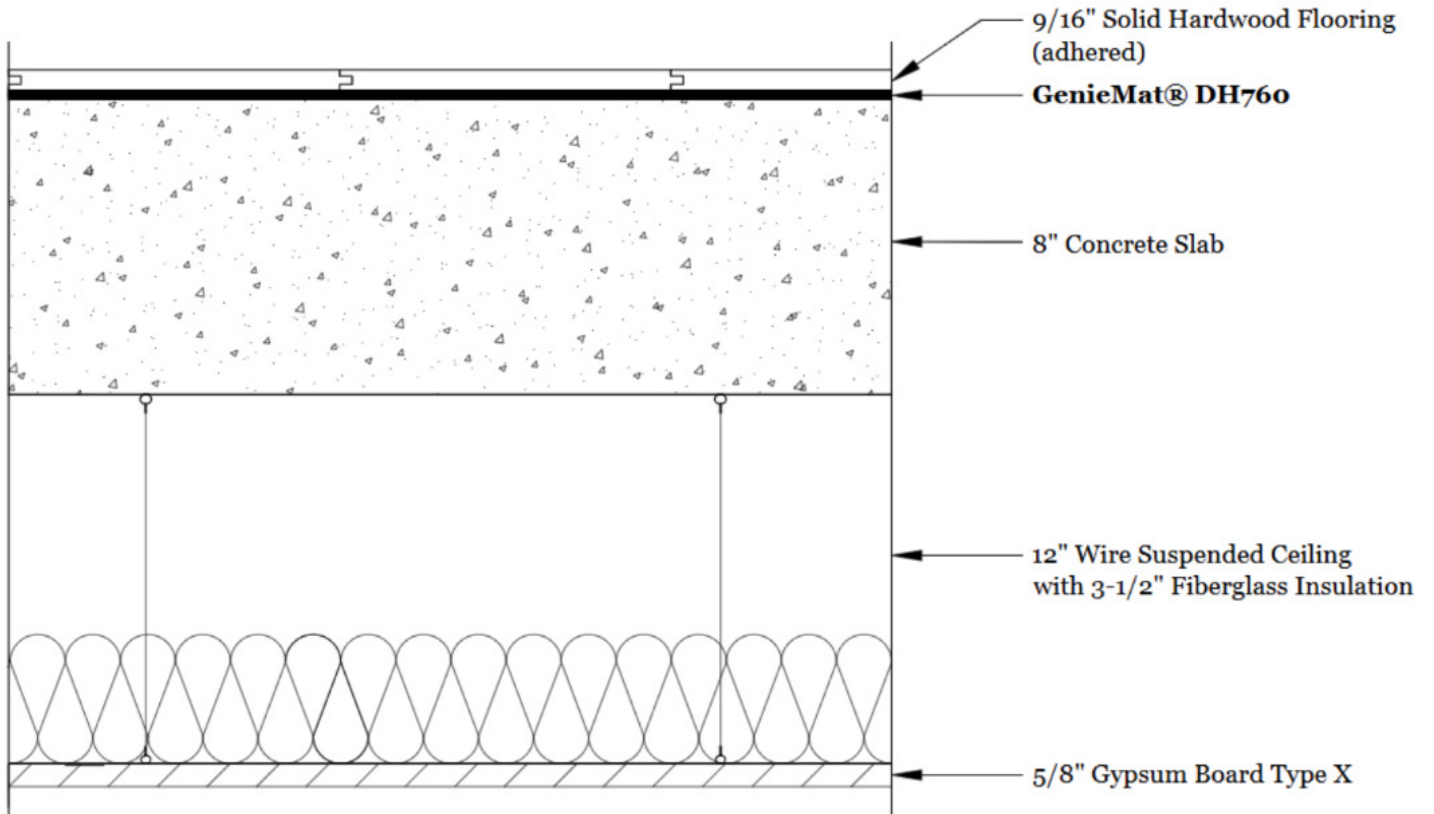


51  
STC

51  
IIC

FC21-0360

### Concrete Slab with Wire Suspended Ceiling



60  
STC

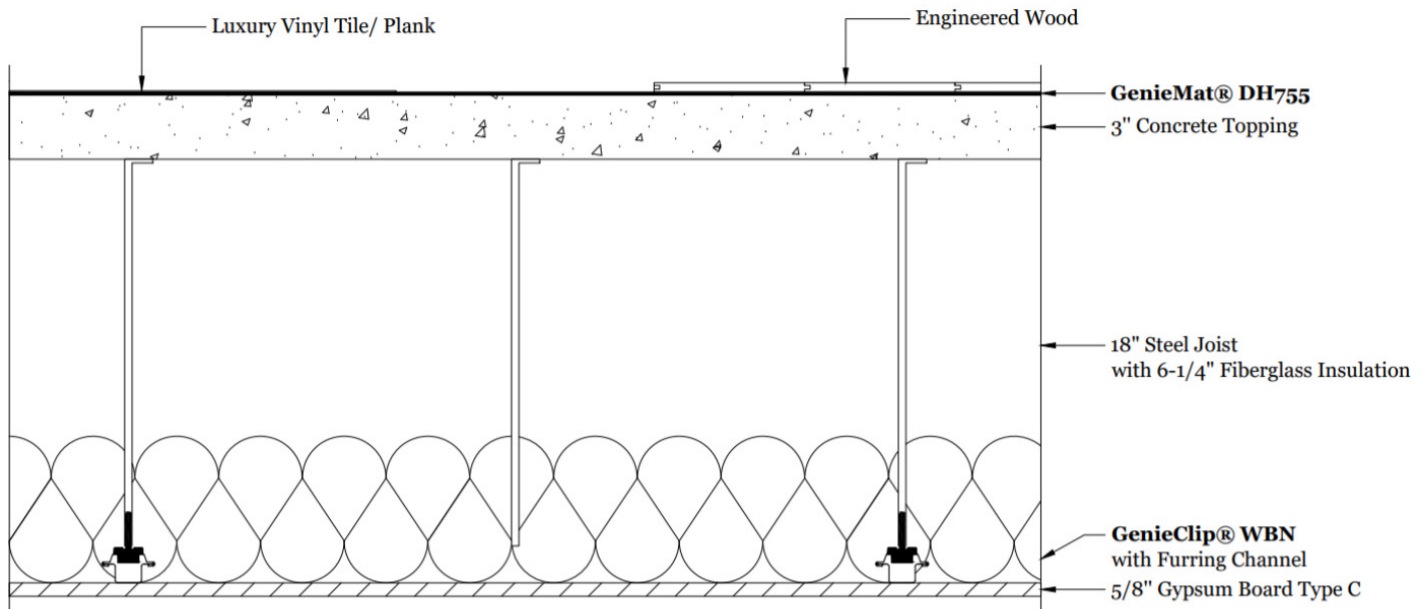
67  
IIC

FC21-0360

# GENIEMAT® DH ACOUSTICAL TEST DATA

## IMPACT INSULATION SYSTEM

### Structural Floor Joist with Concrete Topping



**60**  
STC

**64**  
IIC

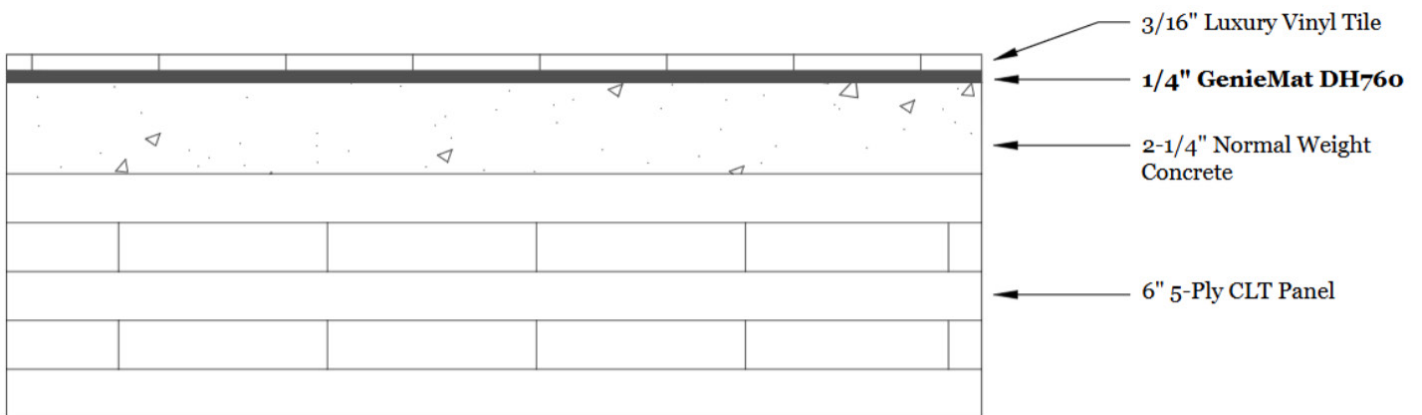
FC22-0473    FC22-0473

**61**  
STC

**65**  
IIC

FC22-0471    FC22-0471

### Cross Laminated Timber-Concrete Composite



**49**  
STC

**53**  
IIC

R7230.05

# TEST RESULTS

## ACOUSTICAL TESTING STANDARDS – CONCRETE AND STEEL STRUCTURES

TEST REPORT NUMBER	PRODUCT	FINISH FLOOR	SUBFLOOR	STRUCTURE	CEILING TYPE	STC RATING (ASTM E90)	IIC RATING (ASTM E492)
G9222.01	None	Vinyl Plank	8" Concrete Slab	None	None	55	43
FC21-0348	<b>GenieMat DH755</b>	Vinyl Plank	8" Concrete Slab	None	None	57	58
Q0101.08	<b>GenieMat DH755</b>	Ceramic Tile	8" Concrete Slab	None	None	57	52
Q0101.06	<b>GenieMat DH760</b>	Ceramic Tile	8" Concrete Slab	None	None	56	54
FC21-0349	<b>GenieMat DH760</b>	Vinyl Plank	8" Concrete Slab	None	None	55	59
FC31-0350	<b>GenieMat DH765</b>	Vinyl Plank	8" Concrete Slab	None	None	58	58
Q0101.04	<b>GenieMat DH765</b>	Ceramic Tile	8" Concrete Slab	None	None	57	56
FC21-0355	<b>GenieMat DH760</b>	Wood Flooring	8" Concrete Slab	None	None	57	57
FC21-0351	<b>GenieMat DH755</b>	Wood Flooring	8" Concrete Slab	None	None	55	57
Q0101.08	<b>GenieMat DH755</b>	Ceramic Tile	8" Concrete Slab	None	None	57	52
Q0101.09	<b>GenieMat DH755</b>	Ceramic Tile	8" Concrete Slab	None	12" Wire Suspended Ceiling, 5/8" Type X GWB	62	61
FC21-0359	<b>GenieMat DH760</b>	Wood Flooring	8" Concrete Slab	None	12" Wire Suspended Ceiling, 5/8" Type X GWB	60	67
FC22-0471	<b>GenieMat DH755</b>	Wood Flooring	18" Steel Joist	3" Concrete Topping	<b>GenieClip WBN</b> , 5/8" Type C GWB	61	65
FC22-0473	<b>GenieMat DH755</b>	Vinyl Plank	18" Steel Joist	3" Concrete Topping	<b>GenieClip WBN</b> , 5/8" Type C GWB	60	64
FC22-0471	<b>GenieMat DH755</b>	Wood Flooring	22" Steel Joist	3" Concrete Topping	<b>GenieClip WBN</b> , 5/8" Type C GWB	62	66
FC22-0481	<b>GenieMat DH755</b>	Vinyl Plank	22" Steel Joist	3" Concrete Topping	<b>GenieClip WBN</b> , 5/8" Type C GWB	61	66

# TEST RESULTS

ACOUSTICAL TESTING STANDARDS – MASS TIMBER STRUCTURES							
TEST REPORT NUMBER	PRODUCT	FINISH FLOOR	STRUCTURE	SUBFLOOR	CEILING TYPE	STC RATING (ASTM E90)	IIC RATING (ASTM E492)
R9342.05	<b>GenieMat DH755</b>	Vinyl Plank	3-Ply CLT	3/4" Plywood, <b>GenieMat FF70</b>	None	53	52
R9342.06	<b>GenieMat DH755</b>	Engineered Wood	3-Ply CLT	3/4" Plywood, <b>GenieMat FF70</b>	None	53	52
R9342.02	<b>GenieMat DH755</b>	Vinyl Plank	5-Ply CLT	3/4" Plywood, <b>GenieMat FF70</b>	None	57	56
R9342.03	<b>GenieMat DH755</b>	Engineered Wood	5-Ply CLT	3/4" Plywood, <b>GenieMat FF70</b>	None	57	55
R7230.05	<b>GenieMat DH760</b>	Vinyl Plank	5-Ply CLT–Concrete Composite	2 1/4" Concrete Topping	None	49	53
FC21-0360	<b>GenieMat DH760</b>	Vinyl Plank	4" Mass Plywood Panel	2" Gypsum Concrete, <b>GenieMat FF25</b>	None	51	51

# GENIEMAT DH PRO

## Waterproofing and Impact Sound Control System.

**GenieMat DH PRO** is a waterproofing and impact sound control system designed to provide both moisture protection and acoustic performance in flooring installations. It serves a dual purpose by acting as a barrier against water infiltration while also reducing impact noise transmission, making it an ideal choice for areas where both sound control and waterproofing are essential.

This system is typically used in multi-family housing, hotels, and commercial spaces where sound privacy and moisture resistance are critical. It can be installed under various types of flooring, including tile, hardwood, and laminate, ensuring durability and effective sound insulation.

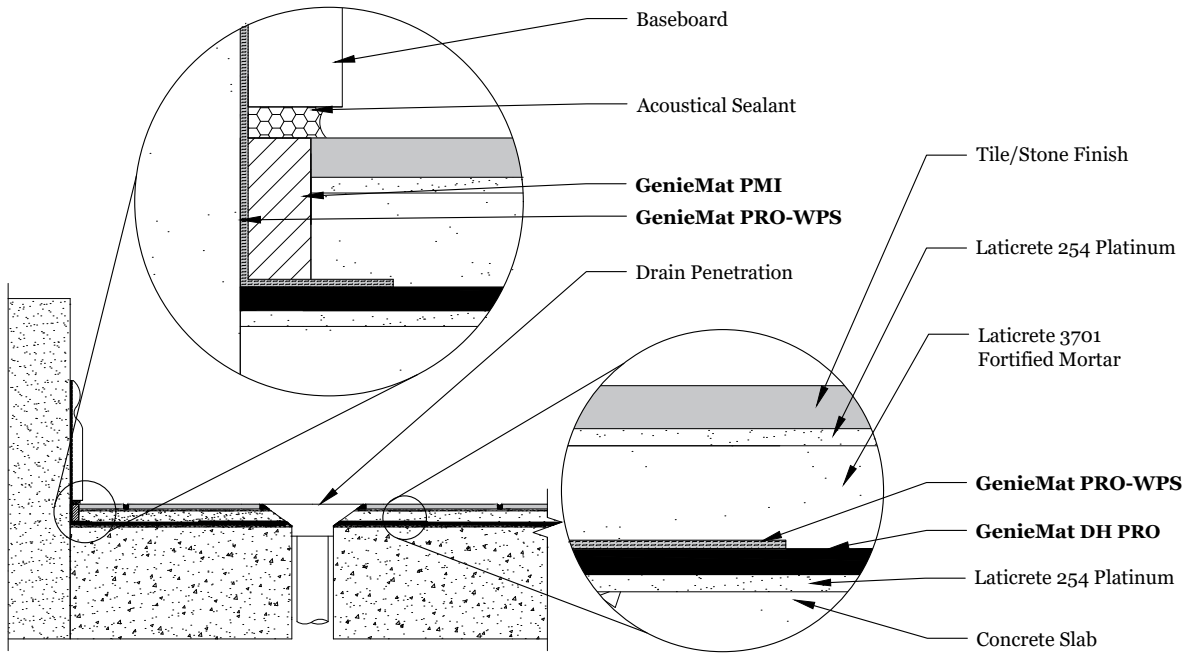
### FEATURES AND BENEFITS

- Waterproof membrane generally applied to the concrete floor to save time, labour and material.
- The highest IIC performance ratings for tile installations.
- Fully waterproof per ANSI 118.10.
- Protect wood flooring from excess moisture vapor in new construction.
- High tensile strength for crack isolation.
- Qualifies for LEED® points.
- Floorscore® certified.
- Complete floor covering system warranty available.
- Mold, bacteria, fungi, and water resistant.

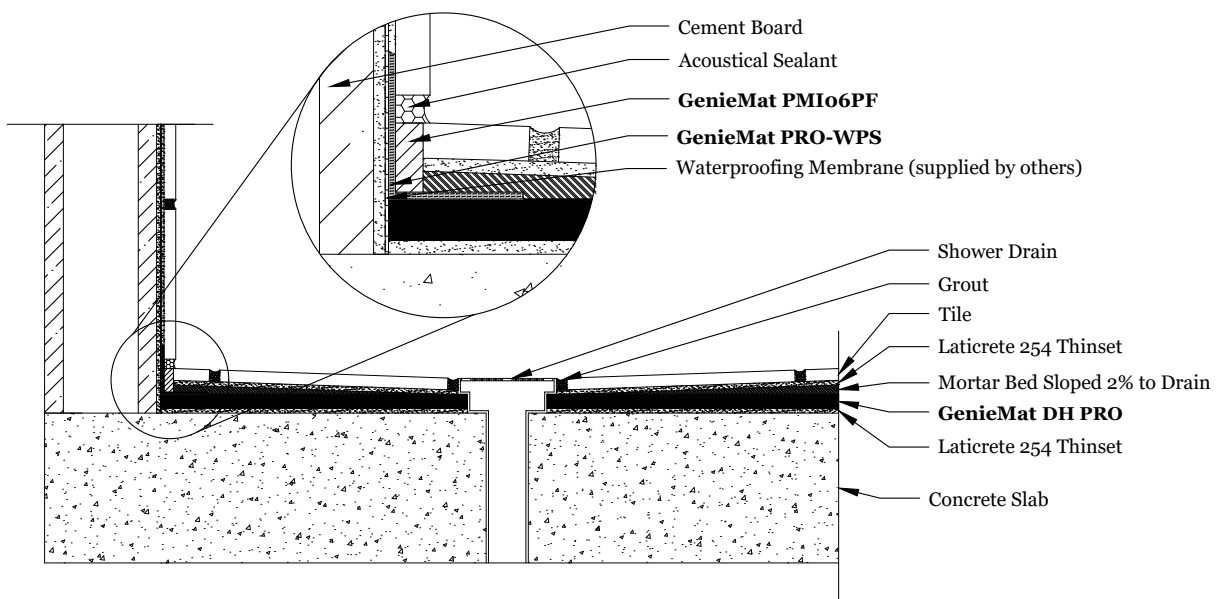
PRODUCT SPECIFICATIONS				
PRODUCT	ROLL SIZE	DYNAMIC STIFFNESS @ 2.5 kPa AND 100 Hz (ASTM D5992)	TYPE A HARDNESS (ASTM D2240)	TCNA ROBINSON TEST WITH TILE (ASTM C627)
<b>GenieMat DH755 PRO</b>	4' x 50'	46 MN/m <sup>3</sup>	45 (± 5) Durometer	Moderate commercial with tile
<b>GenieMat DH760 PRO</b>	4' x 21.5'	40 MN/m <sup>3</sup>	45 (± 5) Durometer	Light commercial with tile
<b>GenieMat DH765 PRO</b>	4' x 13.5'	27 MN/m <sup>3</sup>	45 (± 5) Durometer	Light commercial with tile

# GENIEMAT DH PRO APPLICATION

## Level Drain Detail



## Shower Detail



# GENIEMAT DH PS

## Peel & Stick Sound Control Underlayment

**GenieMat DH PS** is a flat, resilient, reduced sound transmission mat made from 94% recycled rubber content with a laminated pressure-sensitive adhesive, used directly under hard surface floor finishes and over concrete and wood construction.

### FEATURES AND BENEFITS

- Mold, bacteria, fungi, and water resistant.
- Exceeds pass criteria for point load test for crack isolation membrane (ANSI 118.12)
- Meets requirements for VOC emissions (IAQ test, ASTM D5116)
- Qualifies for LEED® points
- Complete floor covering system warranty available
- Floorscore® certified.
- Third-party verified EPDs available

PRODUCT SPECIFICATIONS				
PRODUCT	ROLL SIZE	DYNAMIC STIFFNESS (ASTM D5992) (ASTM D4473) (ASTM 4065)	TYPE A HARDNESS (ASTM D2240)	TCNA ROBINSON TEST WITH TILE (ASTM C627)
<b>GenieMat DH755 PS</b>	4' x 50'	46 MN/m <sup>3</sup>	45 (± 5) Durometer	Moderate commercial with tile
<b>GenieMat DH760 PS</b>	4' x 21.5'	40 MN/m <sup>3</sup>	45 (± 5) Durometer	Light commercial with tile
<b>GenieMat DH765 PS</b>	4' x 13.5'	27 MN/m <sup>3</sup>	45 (± 5) Durometer	Light commercial with tile

## Contact Us

For your project specific questions: **T.416.449.0049** | **E.info@pliteq.com**

© Pliteq Inc. 2025.

®™ Trademarks of Pliteq Inc. The information provided is accurate to the best of our knowledge at the time of issue. However, we reserve the right to make changes when necessary without further notification. Suggested application may need to be modified to conform with local building codes and conditions. We cannot accept responsibility for products that are not used, or installed, to our specifications. All listed dimensions are nominal.



[www.pliteq.com](http://www.pliteq.com)