



It's not magic, it's engineering.®

GENIEMAT® PRO

Waterproofing, Crack Isolation
and Impact Sound Control System



GENIEMAT® PRO

Waterproofing, Crack Isolation and Impact Sound Control System

GenieMat PRO is a waterproofing and impact sound control system designed to provide both moisture protection and acoustic performance in flooring installations. It serves a dual purpose by acting as a barrier against water infiltration while also reducing impact noise transmission, making it an ideal choice for areas where both sound control and waterproofing are essential.

This system is typically used in multi-family housing, hotels, and commercial spaces where sound privacy and moisture resistance are critical. It can be installed under various types of flooring, including tile, hardwood, and laminate, ensuring durability and effective sound insulation.

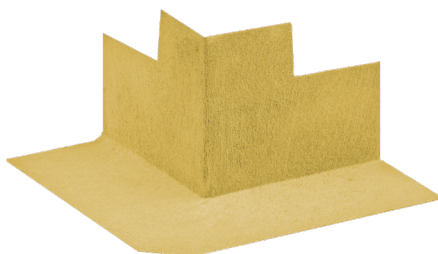
Features and Benefits

- The highest IIC performance ratings for tile installations.
- Fully waterproof per ANSI 118.10.
- Protect wood flooring from excess moisture vapor in new construction per ASTM E96.
- High tensile strength for crack isolation.
- Tear and puncture resistance.
- Qualifies for LEED® points.
- Floorscore® certified.
- Complete floor covering system warranty available.
- Membrane shall not support growth of mold, bacteria, fungi per ANSI 118.10 Section 4.1.
- Temperature, UV and chemical resistance.

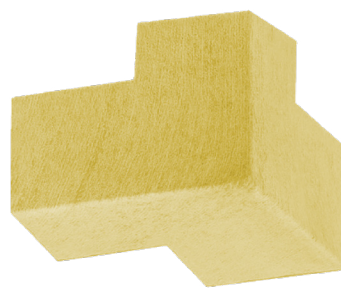
GENIEMAT® PRO ACCESSORIES



GenieMat PRO-WPS



**GenieMat PRO-WPS
Outside Corner**



**GenieMat PRO-WPS
Inside Corner**

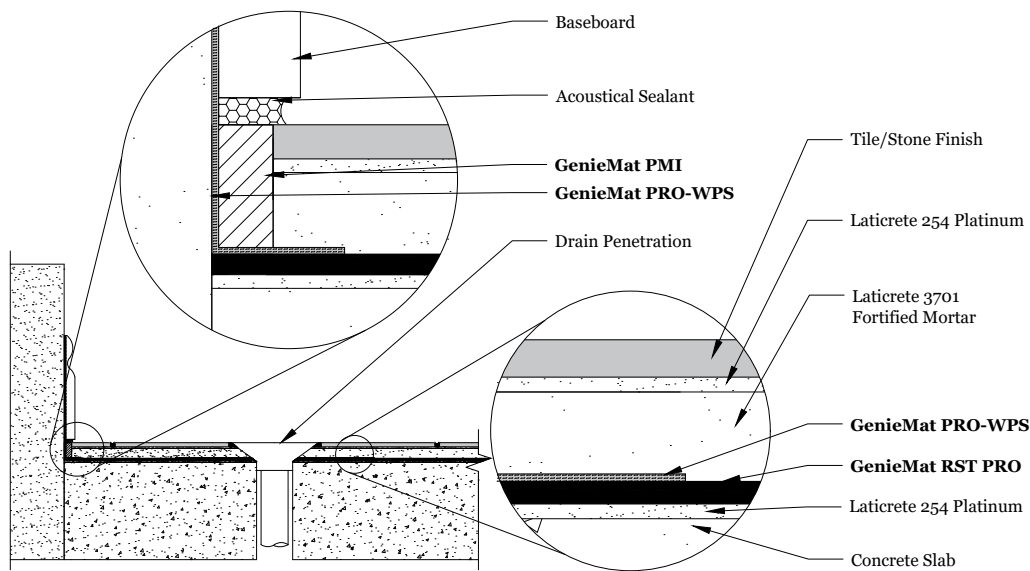
GENIEMAT® PRO PRODUCT TESTING

MATERIAL PROPERTY	TEST METHOD	TEST REQUIREMENT	RESULT
Fungus and Microorganism resistance	ANSI A118.10 Section 4.1	Membrane shall not support mold growth	Pass
Seam Strength	ANSI A118.10 Section 4.2 (ASTM D571)	16 lbf / 2" width	44 lbf / 2" width
Breaking Strength	ANSI A118.10 Section 4.3 (ASTM D571)	170 psi minimum	Longitudinal: 200 psi Transverse: 202 psi
Dimensional Stability	ANSI A118.10 Section 4.4 (ASTM D1204)	0.7% maximum change in length	Pass
Waterproofness	ANSI A118.10 Section 4.5 (ASTM D4068-01)	No moisture penetration after 48 hours	Pass
Shear strength	ANSI 118.10 Section 5 (ASTM C482-9.8)	50 psi minimum	7-day: 83 psi 7-day water immersion: 59 psi 4-week: 86 psi 12-week: 76 psi 100-day water immersion: 64 psi
Water Vapor Permeability	ASTM E96	Class 1 Impermeable Vapor Barrier Perm Rating < 0.1	Class 1 Impermeable Vapor Barrier Perm rating = 0.02

PRODUCT SPECIFICATIONS				
PRODUCT	ROLL SIZE	DYNAMIC STIFFNESS @ 2.5 kPa AND 100 Hz (ASTM D5992)	TYPE A HARDNESS (ASTM D2240)	TCNA ROBINSON TEST WITH TILE (ASTM C627)
GenieMat RST03 PRO	4' x 50'	33 MN/m ³	50 (± 5) Durometer	Extra heavy commercial with tile
GenieMat RST05 PRO	4' x 30'	26 MN/m ³	50 (± 5) Durometer	Moderate commercial with tile
GenieMat RST10 PRO	4' x 15'	20 MN/m ³	50 (± 5) Durometer	Light commercial with tile
GenieMat RST12 PRO	4' x 13'	20 MN/m ³	50 (± 5) Durometer	Light commercial with tile
GenieMat DH755 PRO	4' x 50'	46 MN/m ³	45 (± 5) Durometer	Moderate Commercial with tile
GenieMat DH760 PRO	4' x 21.5'	40 MN/m ³	45 (± 5) Durometer	Light Commercial with tile
GenieMat DH765 PRO	4' x 13.5'	27 MN/m ³	45 (± 5) Durometer	Light Commercial with tile

GENIEMAT® PRO APPLICATION

Level Drain Detail



Shower Detail

